

Soil Water Management



Based on 30 years of field tests and trials, backed by ISO9001 quality.



Soil Data Probes

Provide high resolution soil moisture, temperature & optional salinity* (known as TriSCAN). Probes are used for enhanced research and improved commercialised crop management across various soil types.

*The Sentek SoluSAMPLER is used to enhance salinity monitoring.



Drill & Drop

Drill & Drop can be completely buried. Sensors are fixed every 10cm (4"), and there are 5 length options: 10cm (4") (SDI-12 only) 30cm (12"), 60cm (24"), 90cm (36") and 120cm (48"). Moisture, temperature and optionally salinity are measured at all sensor depths.

The multi-patented Installation is fast and undisturbed (slurry-free) for immediately valid data.



EnviroSCAN

EnviroSCAN features flexible probe lengths with sensor depths measuring moisture, and optionally temperature and salinity are customised to suit the application. Choice of tightly sealed screw cap or ground-level, watertight flat cap. Full in-field serviceability and undisturbed (non-slurry) installation up to 2.5 m.

EnviroSCAN can be installed to monitor depths up to 40m (120').



Diviner 2000

Designed to take soil moisture profile measurements every 10cm (4") inside an access tube. It can monitor up to 99 sites and comes with a hand-held data logging display unit. The access tube used for Diviner 2000 can be used to upgrade to an EnviroSCAN probe. Data is best viewed in [IrriMAX Desktop](#).

The Sentek solution uses logging RS232 and RS485 interfaces.

Integrators use RS232/485 Modbus and SDI-12.

Uploading Data

Sentek provides flexibility and convenience for accessing data collected by our probes using telemetry and Bluetooth to upload data to IrriMAX Live.

Bluetooth

Self-logging Drill & Drop probes feature an incorporated Bluetooth communication option. Data is collected on a mobile phone (iOS or Android) in the field using low energy Bluetooth and the [Sentek Connect App](#).



Compact

The Sentek Compact offers a low profile design, modem and long life or rechargeable battery. It connects to either Drill & Drop via cable or EnviroSCAN probes as a complete cable-free solution ([All-in-One](#)).



Plus

The Sentek Plus is connected to a Drill & Drop or EnviroSCAN probe via 5m (16') of cable and self-charges via solar power. Data is transmitted via cellular or satellite (satellite EnviroSCAN only). Non-telemetry [SOLO](#) option with [SoloPORTER](#) (data uploads to [IrriMAX Desktop](#)) upgradeable to Plus.



Multi

Sentek's Multi connects to up to two probes with cable lengths up to 1000m (3280'). Two pulse input (rain & flow) and two air temperature sensors can be added. Data is transmitted via cellular or satellite (satellite with EnviroSCAN only).



System Guide

Crop	Probe, Length	Bluetooth	Compact	Plus	Multi
Leafy Vegetables	Drill & Drop, 30cm (12")				
Root Vegetables	Drill & Drop, 60cm (24")				
Corn, Cotton	Drill & Drop, 90cm (36")				
Vines, Tree Crops	Drill & Drop, 120cm (48")				
Permanent Vines, Agricultural Research	EnviroSCAN, 1.5m (5')				
Permanent Trees, Agricultural Research	EnviroSCAN, 2m (7')				
Research in Agriculture, Hydrology, Vadose Zone, Groundwater, Leachate & Modelling	EnviroSCAN, deep installation ≤40m (120')				

Key: = not suitable = suitable = recommended

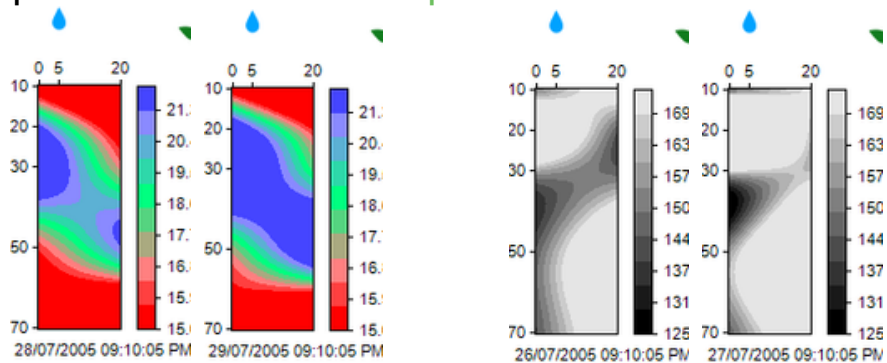
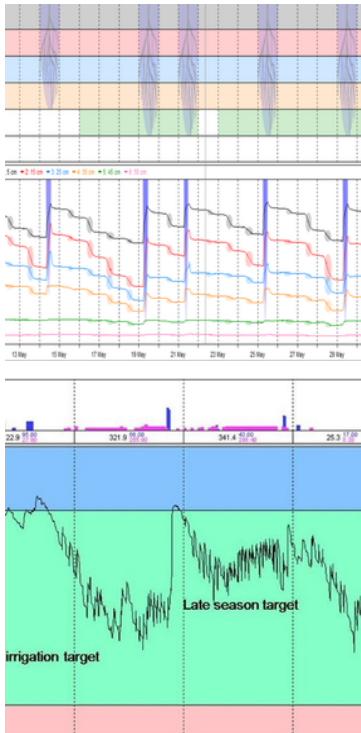
Software

Irrimax Live is Sentek's world-leading analysis and management platform featuring a variety of exclusive soil water management tools.

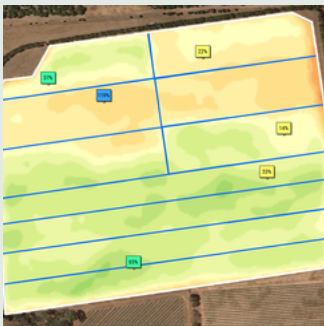
Irrimax Live

Irrimax Live is specialised cloud based software designed for and by agronomists. Irrimax Live is ideal for analysing data including root activity, daily crop water use, onset of stress, salinity and fertilizer dynamics. The user-interface allows for simplified communication of irrigation/fertigation scheduling based on state of the art science.

Compatible with **Irrimax Desktop** software on which it is based.

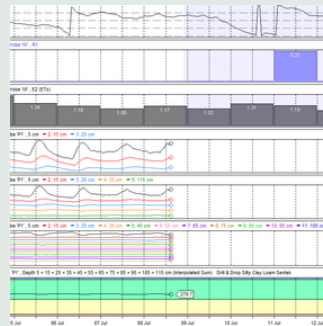


Satellite Imagery



Irrimax Live presents a Map View of the selected property where 10 x 10 m2 resolution images can be offered once or twice a week to track over- or under performance of crops. NDVI, NDMI, NDRE, MSAVI and ReCI are available.

MeteoBlue



Sentek has partnered with MeteoBlue to offer a 7-day weather forecast for any location on Earth. The 7 parameters are ETo, air temperature, rain, wind speed, wind direction, air pressure and air humidity.

Galcon Synergy

The inclusion of Irrimax Live onto the **Galileo Cloud** and **GSI Pro** platforms has created a single-view user interface.